

AGAROSE - IBF - AGAROSE

INDUBIOSE POWDER (AGAROSE)

NEUTRAL GEL-FORMING
POLYSACCHARIDE EXTRACTED
FROM GELOSE

Devoid of polar groups, Indubiose gels offer all the advantages of agar gels with none of their drawbacks.

The inert character of Indubiose eliminates any danger of interference with chemical and biological substances. In microbiology, Indubiose permits and often considerably enhances the growth of a great number of bacteria and viruses. Indubiose is also a supporting medium of choice for immunological gel diffusion techniques as well as for electrophoretic separation procedures.

THREE GRADES AVAILABLE :

INDUBIOSE A. 37 = gelling point at 37°C
INDUBIOSE A. 45 = gelling point at 45°C
INDUBIOSE HAA SPECIAL for Australia antigen research.

APPLICATIONS :

FOR ELECTROPHORESIS AND IMMUNOLOGY :
Indubiose A. 37.
FOR BACTERIOLOGY AND VIROLOGY :
Indubiose A. 45.
FOR AUSTRALIA ANTIGEN RESEARCH :
Indubiose HAA Special.

INDUBIOSE A 37	}	25 gr	\$ 15.00
INDUBIOSE A 45		100 gr	45.00
INDUBIOSE HAA 37		250 gr	90.00
INDUBIOSE HAA 45		500 gr	160.00

INDUBIOSE PLATES

new

FOR ELECTROPHORESIS

Gel of acrylamide-agarose in the form of dehydrated plates of 10 x 20 cm having the appearance of a flexible and transparent rectangular film.

ADVANTAGES OF THE DEHYDRATED PLATES :
Simplicity of use ; regularity of preparations, unlimited shelf-life.

ADVANTAGES OF THE REHYDRATED GEL :
Not only a supporting medium but also a true molecular sieve ; rapid migration ; high transparency ; absence of diffusion phenomena ; conservable electrophoregrams.

APPLICATIONS :

Separation of protein substances of molecular weight ranging from 6,000 to 1,000,000 such as enzymes, serum proteins and protein hormones.

SUPPLY :

Indubiose plates for electrophoresis are supplied in packages of 10 (sufficient for 30 to 40 electrophoretic analyses).

INDUBIOSE PLATES

1 pack	\$ 42.50
3 packs	99.50
10 packs	300.00

Complete bulletin with references
available on request

F.O.B. CARLE PLACE, N.Y. • TERMS: net 30 days

GALLARD-SCHLESINGER CHEMICAL MFG. CORP.

584 Mineola Avenue, Carle Place, L.I., N.Y. 11514 • Tel: (Code 516) ED 3-5600 • (In N.Y.C. Call: Stillwell 6-0900)

*Announcing the definitive reference book
in clinical microbiology.....*

NEW SECOND EDITION OF
**MANUAL OF CLINICAL
MICROBIOLOGY**

Edited by EDWIN H. LENNETTE. Viral and Rickettsial Disease Laboratory, California Department of Health, Berkeley; **EARLE H. SPAULDING,** Department of Microbiology and Immunology, Temple University Health Sciences Center, Philadelphia; and **JOSEPH P. TRUANT,** Advance Medical Laboratories, Pontiac, Michigan.

Completely revised and updated, the new second edition of MANUAL OF CLINICAL MICROBIOLOGY now replaces the first edition as the definitive working reference guide for all involved in laboratory work. It will also prove to be as useful a textbook as was the previous edition, for both medical students and medical technology students.

The appropriate methods for complete microbiological examination of clinical specimens are fully presented, as are the correct procedures for the isolation and identification of bacteria, fungi, viruses, and parasites. While emphasis is given to those organisms most commonly found in human infection, the rarer organisms are not ignored.

CONTENTS BY SECTION: General • Aerobic Bacteria • Spirochetes
Anaerobic Bacteria • Susceptibility Testing of Antimicrobial Agents
Immunoserological Tests • Fungi • Parasites • Viruses and
Rickettsiae • Infection Prevention — Quality Control • Media,
Reagents, and Stains

Ordering information: hard cover \$20.00
flexible cover \$15.00

(Note: Available to ASM members at \$12.00 for the hard cover, \$8.00 for the flexible cover. If ordering at member rates, please remit payment with order).

Please direct all inquiries and orders to the publisher.....

AMERICAN SOCIETY FOR MICROBIOLOGY

PUBLICATIONS OFFICE, 1913 I STREET, N.W., WASHINGTON, D.C. 20006

Carol knows the way it is today.

She is an expert on blood fractions. Carol is deeply involved in serological testing and development of new methods for the evaluation of animal and human blood products, both for us and our customers.

Carol is highly qualified for technical service on all of our Serological Albumin Solutions in all of the diverse markets where they are used. And she's only one of many experts on biochemicals available at Reheis to assist you in the use of our products or in your own methodology development.

Reheis biochemical products include glandular derivatives, pharmaceutical ingredients, bovine blood fractions and cell culture ingredients. So, if you're encountering problems in these areas—or would like information on one of our other products—talk or write to an expert at Reheis, P.O. Box 511, Kankakee, Illinois 60901, Phone (815) 932-6771.

For the way it is today.



REHEIS CHEMICAL COMPANY
Division of Armour Pharmaceutical Company
Greyhound Tower, Phoenix, Arizona 85077

**Need an
answer on
blood typing
or grouping?**

**Talk with
Carol Lindell.**



The History of Difco Quality Control...

and what it means to you today

Difco was developed by producing better products through control of quality. Now there is a history of more than seventy years of dedication to accuracy and dependability, specialized equipment, exacting materials control.

It's a history of a unique kind of control. Difco tests each ingredient before it is accepted for use. Testing throughout preparation assures compatibility.

The finished product is then tested for dependable performance under the conditions for which the product is intended. Result? Perfectly standardized products that give reproducible results every time.

What does it mean to you?

Assured reliability. Savings in time and money.
Dependable microbiological results in your laboratory.

DIFCO

Difco Laboratories Detroit 48201 USA

Now Available from ASM

Cumitech 2

Laboratory Diagnosis of Urinary Tract Infections

By Arthur L. Barry, P. Byrd Smith, and Marvin Turck

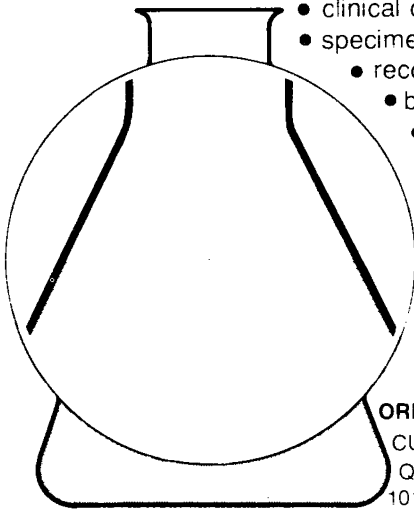
Coordinating Editor: Thomas L. Gavan

Chairman of the Editorial Board

of ASM CUMITECHS: John C. Sherris

Laboratory Diagnosis of Urinary Tract Infections is the second pamphlet in ASM's new series, CUMITECHS (*Cumulative Techniques and Procedures in Clinical Microbiology*). These pamphlets are brief, authoritative, and practical presentations of clinical microbiological procedures which are currently known to be optimally effective. Unsuitable procedures, and procedures for special cases are covered. CUMITECHS aim to dispel uncertainties about laboratory practice, by putting forward the consensus of experts from a variety of centers.

CUMITECH 2 covers the following topics:



- clinical considerations
- specimen collection
- recommended basic procedure
- bacteriologic examination
- limitations of the basic procedure
- recommended supplementary procedures for special situations
- chemical methods and bacteriologic kits for urinary tract infection screening
- unsuitable procedures

The pamphlet will be a useful working guide in the clinical laboratory and hospital.

ORDERING INFORMATION

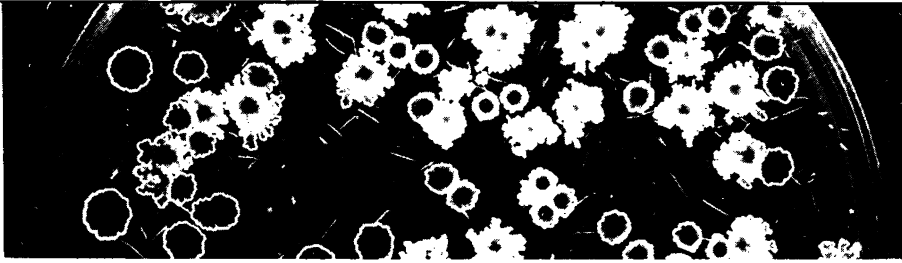
CUMITECH 2 (April 1975) costs \$2.00 a copy.

Quantity Discounts: 11 - 50 // \$1.50; 51 - 100 // \$1.00;
101 - 250 // \$0.75; 251 and more // \$0.50.

CUMITECH 1, BLOOD CULTURES (October 1974), is also available. Standing Orders to the CUMITECH series are welcome. If you would like to receive a copy of each CUMITECH published, you will be billed annually for the number of CUMITECHS (// \$2.00 each) which you have received during the year.

Please direct all inquiries and orders to the publisher.

AMERICAN SOCIETY FOR MICROBIOLOGY
Publications Office, 1913 I Street, N.W., Washington, D.C. 20006



SPORES VI

EDITORS:

Philipp Gerhardt, Harold L. Sadoff, and Ralph N. Costilow

This new book comprises papers selected from the **Sixth International Spore Conference**, held at Michigan State University, October 10-13, 1974.

Comparative sporology of diverse microbes, other than the Bacillaceae, is one main theme of this volume. A series of review articles brings together critical assessments of what is known and what is not known about prokaryotic and eukaryotic spores and similar resting bodies of the following groups: actinomycetes, myxobacteria, azotobacter, slime molds, blue-green algae, fungi, and yeasts.

Molecular aspects of developmental biology constitute the second major theme of this volume, represented in a group of papers on the widely studied spores of *Bacillus* and *Clostridium*. Molecular control and regulation of differentiation dominate study of the cellular processes of sporulation and germination in the next two sections. Papers on dormancy and resistance comprise a fourth section, while a fifth section includes updated genetic maps of *Bacillus subtilis* and papers on special methods used in spore research.

SPRING 1975, 550 pages, illustrated, \$15.00

Members of **ASM** may purchase **SPORES VI** for \$8.00

Please direct all orders and inquiries to:

AMERICAN SOCIETY FOR MICROBIOLOGY

PUBLICATIONS OFFICE, 1913 I STREET N.W. WASHINGTON, D.C. 20006

First in a New Series

Microbiology — 1974

Microbiology — 1974 is the first volume in a new series designed to bring to the reader the proceedings of recent, important symposia, round tables, and conferences.

This volume includes the proceedings of the first ASM Conference on *Plasmids*, which was held in January 1974. It is supplemented by a memoir of Dr. T. Watanabe, and also contains two clinically oriented symposia from the 1974 Annual Meeting, one on *Vibrio parahaemolyticus* and one on *Roles of Iron in Host-Parasite Interactions*.

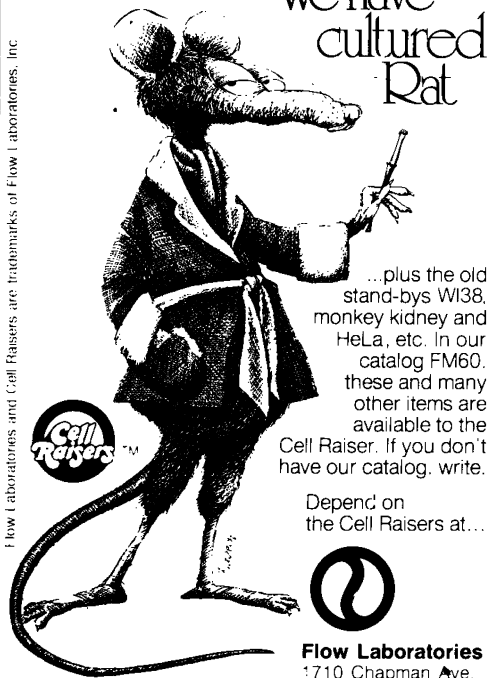
March 1975. 313 pages. \$16.00

(Available to members of ASM at \$9.00. Payment should accompany order.)

AMERICAN SOCIETY FOR MICROBIOLOGY

Publication Sales
1913 I Street, N.W.
Washington, D.C. 20006

Flow Laboratories and Cell Raisers are trademarks of Flow Laboratories, Inc.



We have
cultured
Rat

...plus the old stand-bys WI38, monkey kidney and HeLa, etc. In our catalog FM60, these and many other items are available to the Cell Raiser. If you don't have our catalog, write.

Depend on the Cell Raisers at...

Flow Laboratories
1710 Chapman Ave.
Rockville, Md. 20852
(301) 881-2900

JOURNAL OF CLINICAL MICROBIOLOGY

JOURNAL OF CLINICAL MICROBIOLOGY, the latest addition to **ASM's** group of superb professional journals, started publication in January 1975. Clinical microbiologists, clinical pathologists, and medical technologists will all find this journal of exceptional value.

The Editor-in-Chief is **Dr. Albert Balows**, Director of the Bacteriology Division, Center for Disease Control, Atlanta. The Editors are **Dr. Lorraine Friedman**, Professor of Microbiology, Tulane University School of Medicine, New Orleans; **Dr. Henry D. Isenberg**, Long Island Jewish-Hillside Medical Center, Professor of Clin-

ical Pathology, State University of New York at Stony Brook; **Dr. Nathalie J. Schmidt**, Research Specialist, Viral and Rickettsial Disease Laboratory, California Department of Health, Berkeley; and **Dr. John A. Washington II**, Head of the Section of Clinical Microbiology, Mayo Clinic, Rochester, Minnesota.

The subscription rate for **JOURNAL OF CLINICAL MICROBIOLOGY**, which is published monthly, is \$50.00 a year.

(Members of **ASM** may subscribe at a special membership rate.)

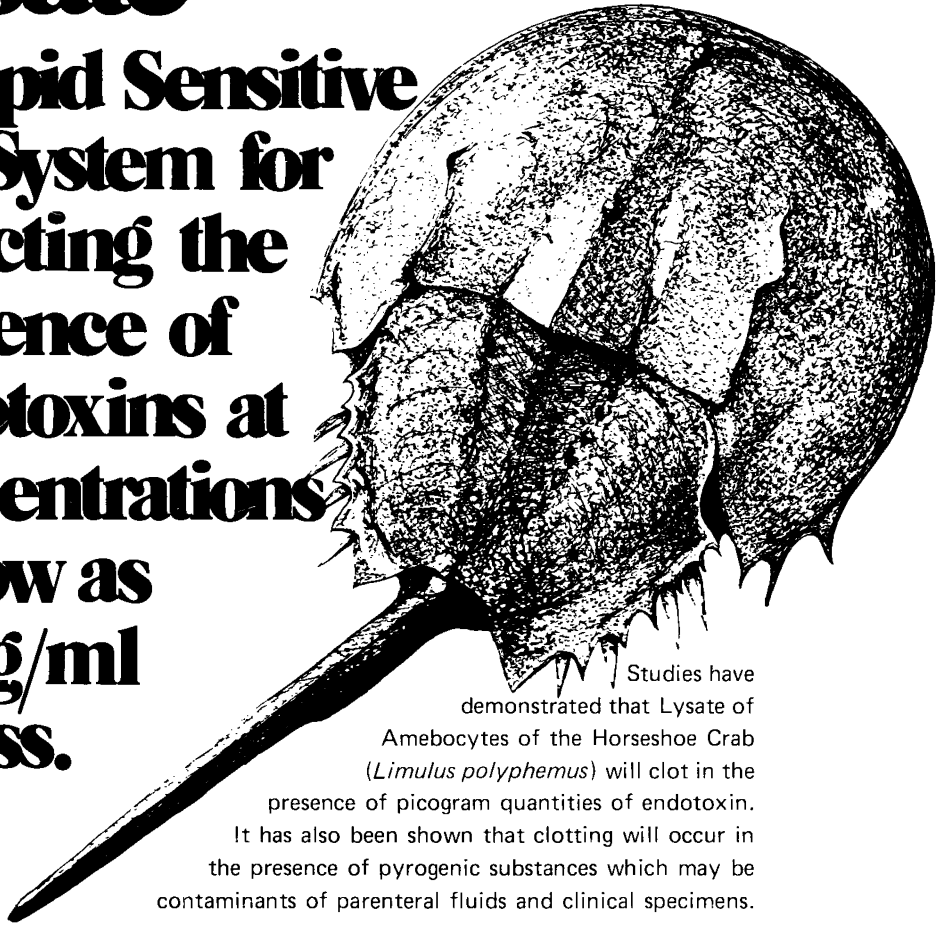
Please direct all inquiries and orders to the publisher...

AMERICAN SOCIETY FOR MICROBIOLOGY

PUBLICATIONS OFFICE, 1913 I STREET, N.W., WASHINGTON, D.C. 20006

Limulus Amebocyte Lysate

**A Rapid Sensitive
Test System for
Detecting the
Presence of
Endotoxins at
Concentrations
as Low as
1.0 ng/ml
or less.**



Studies have demonstrated that Lysate of Amebocytes of the Horseshoe Crab (*Limulus polyphemus*) will clot in the presence of picogram quantities of endotoxin. It has also been shown that clotting will occur in the presence of pyrogenic substances which may be contaminants of parenteral fluids and clinical specimens.

Microbiological Associates now has available Limulus Amebocyte Lysate (LAL). Packaged in two convenient sizes, both containing positive and negative controls.

5 test package (designed to test 5 specimens, includes 5 sets of controls)

20 test package (designed to test 20 specimens, includes 1 set of controls)

Write or call for complete product information.



Microbiological Associates

4733 BETHESDA AVE., BETHESDA, MD. 20014 • TELEPHONE: (301) 654-3400 • TOLL FREE: (800) 638-0998