

ERRATUM

An Immunodominant K^b -Restricted Peptide from the p15E Transmembrane Protein of Endogenous Ecotropic Murine Leukemia Virus (MuLV) AKR623 That Restores Susceptibility of a Tumor Line to Anti-AKR/Gross MuLV Cytotoxic T Lymphocytes

HILLARY D. WHITE, DOUGLAS A. ROEDER, AND WILLIAM R. GREEN

Department of Microbiology and the Norris Cotton Cancer Center, Dartmouth Medical School, Lebanon, New Hampshire 03756-0001

Volume 68, no. 2, p. 900: Figure 2 should appear as shown below.

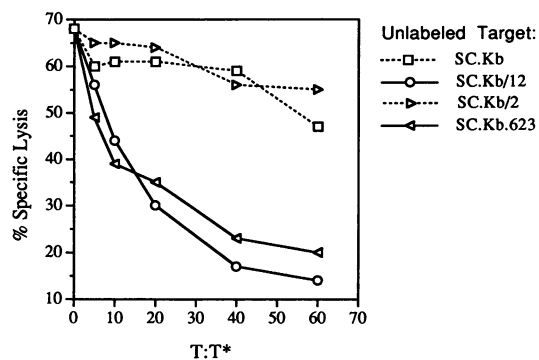


FIG. 2